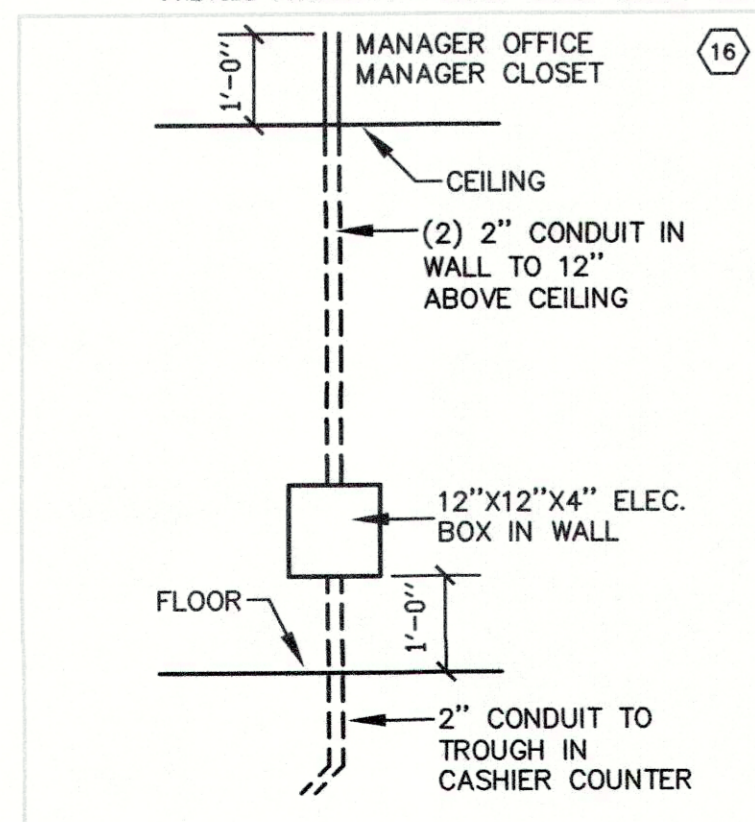


LIGHT FIXTURE SCHEDULE

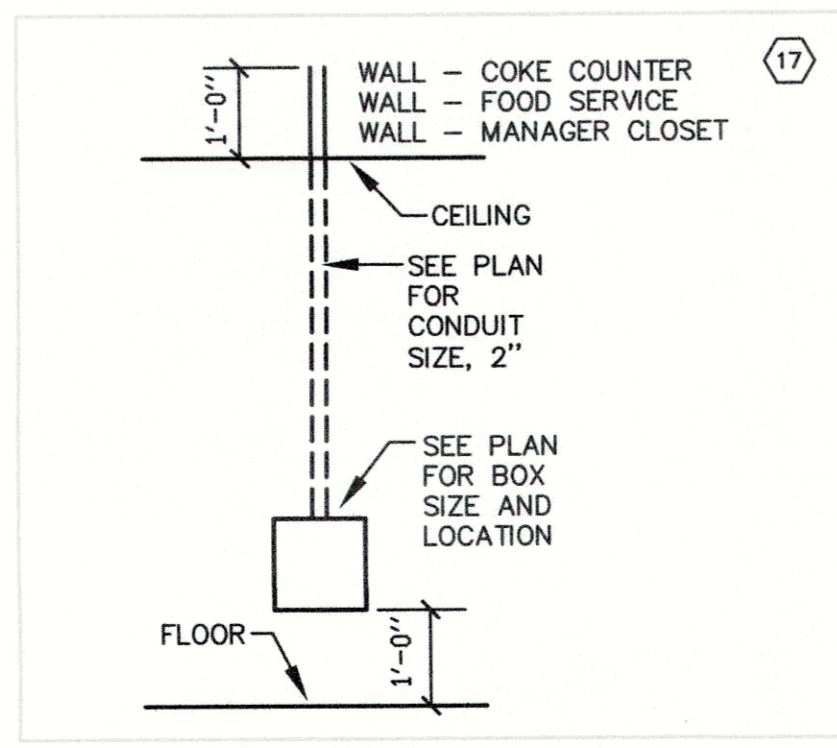
TYPE	DESCRIPTION	MODEL	LAMPS	REMARKS	VOLTAGE
A4 78 FIXTURES	4' LED WITH HIGH STRENGTH POLYMER REFLECTOR AND HOUSING WITH TROUGH WIRING CHANNEL AND SURFACE OR SUSPENDED MOUNTING. PROVIDE 4000 LUMEN PACKAGE WITH 3500K COLOR TEMPERATURE.	LSI DV HD CW UE	LED'S INCLUDED.	PROVIDE WITH A MINIMUM 80 CRI AND 10 YEAR WARRANTY. MOUNT AT 11' ABOVE FINISHED FLOOR.	120V
C 4 FIXTURES	SURFACE VAPOR TIGHT LED WITH IMPACT RESISTANT FIBERGLASS HOUSING AND POLYCARBONATE LENS. PROVIDE WITH 3500K COLOR TEMPERATURE AND 6000 LUMEN OUTPUT.	LSI EGS 4 S LED HD CW UE	LED'S INCLUDED.	PROVIDE WITH A MINIMUM 80 CRI AND MINIMUM LM-80 RATING.	120V
EB 1 FIXTURE	LED COMPATIBLE, 125W, 90 MINUTE, SINE WAVE INVERTER WITH MAINTENANCE FREE BATTERY.	IOTA IIS 125 SM	NO LAMPS	PROVIDE SURFACE MOUNTED IN STORAGE ROOM AS INDICATED.	120V
F 1 FIXTURE	ROUGH SERVICE WALL MOUNT FIXTURE WITH A19 BASE AND LED SCREW IN LAMP.	RP 6 50 LED	PROVIDE CREE A19 SCREW IN LED LAMP.		120V
G 12 FIXTURES	LED SURFACE LIGHT WITH 5700K COLOR TEMPERATURE, DIE CAST ALUMINUM HOUSING WITH SYMMETRIC TYPE 5 DISTRIBUTION.	LSI CRU SM SC LED HD CW UE MSV	LED'S INCLUDED.	PROVIDE WITH A MINIMUM 69 CRI. PROVIDE WITH A MINIMUM 90 LUMENS PER WATT PROVIDE WITH A MINIMUM 90% LUMEN MAINTENANCE AT 50,000 HOURS OF USE.	120V
H	LED COVE LIGHTING.	(1) LSI-LDL3-12-LED-CW-24 (6) LSI LDL3-48-LED-CW-24 (6) LSI 12' JUMPER 35148302 (1) LSI RPSE40 LED 120 POWER SUPPLY (2) LSI RPSE100 LED 120 POWER SUPPLY	LED'S INCLUDED.	PROVIDE LENGTH AS INDICATED ON PLANS. PROVIDE WITH A MINIMUM 85 CRI.	120V
J 7 FIXTURES	18" STEMS WITH CANOPY.	(7) LSI-AUP-S-LED-HD-NW ACF16 GWT FROSTED LENS (7) LSI BC 600 3 GWT CANOPY	LED'S INCLUDED.	PROVIDE WITH 18" DOWN ROD FOR MOUNTING BELOW BEAMS	120V
K 8 FIXTURES	100 WATT 9" PENDANT WITH GALVANIZED HOUSING AND BLACK GRID.	BARNLIGHT BLE-C-LAR PC, LED12 975 SBK 1250 FL 120	LED'S INCLUDED.	COORDINATE SUSPENSION LENGTH WITH OWNER AND ARCHITECT.	120V
M 3 FIXTURES	WALL MOUNT LED WITH CAST ALUMINUM HOUSING AND TEMPERED GLASS LENS.	LSI PWMS LED HD CW UE BLK	LED'S INCLUDED.		120V
N 2 FIXTURES	WALL MOUNT OVER MIRROR LIGHT.	CA NARM LTD. I.V.L. 902A 03313BP WITH 60 WATT EQUIVALENT LED ROUND BULBS	PROVIDE (3) BV 120V LED LAMPS FOR EACH FIXTURE.		120V
O 2 FIXTURES		BARNLIGHT BLE G CGG2/G43 PC LED 975 2200 FG 120	PROVIDE (3) BV 120V LED LAMPS FOR EACH FIXTURE.		120V
X1 1 FIXTURE	EXIT LIGHT WITH DUAL HEAD EMERGENCY LIGHTING AND BATTERY BACK UP.	LSI PRX RU BK LDI1	LED'S INCLUDED.	PROVIDE WITH BATTERY CAPACITY TO POWER ALL ASSOCIATED EMERGENCY HEADS FOR 90 MINUTES.	120V
XX 2 FIXTURES	DUAL HEAD EXTERIOR REMOTE EMERGENCY LIGHTING HEADS	LSI 2TMLED BLK	LAMPS INCLUDED	PROVIDE BATTERY BACK UP FROM NEAREST EXIT SIGN AS INDICATED ON PLANS.	120V
X2 3 FIXTURES	EXIT LIGHT WITH DUAL HEAD EMERGENCY LIGHTING AND BATTERY BACK UP.	LSI LPRX R U BK LDI1 R	LED'S INCLUDED.	PROVIDE WITH BATTERY CAPACITY TO POWER ALL ASSOCIATED EMERGENCY HEADS FOR 90 MINUTES.	120V
XX2 2 FIXTURES	SINGLE HEAD EXTERIOR REMOTE EMERGENCY LIGHTING HEADS	LSI TMLED VI BLK	LAMPS INCLUDED	PROVIDE BATTERY BACK UP FROM NEAREST EXIT SIGN AS INDICATED ON PLANS.	120V
CEILING FANS 3 FIXTURES		MEJA 52" CEILING FAN, FLUSH MOUNTED CEILING, WHITE			

EXTERIOR LIGHTING TIMECLOCK:

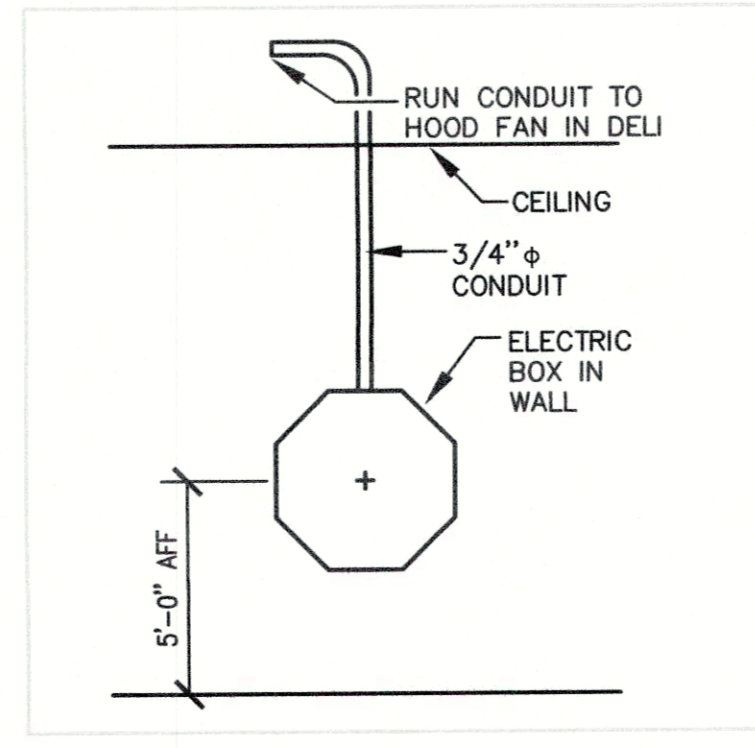
PROVIDE INTERNATIC ET9015C SINGLE CIRCUIT 365 DAY TIME CLOCK FOR EXTERIOR LIGHTING THROUGH SHUNT TRIP FUNCTION OF PANEL 'DI'



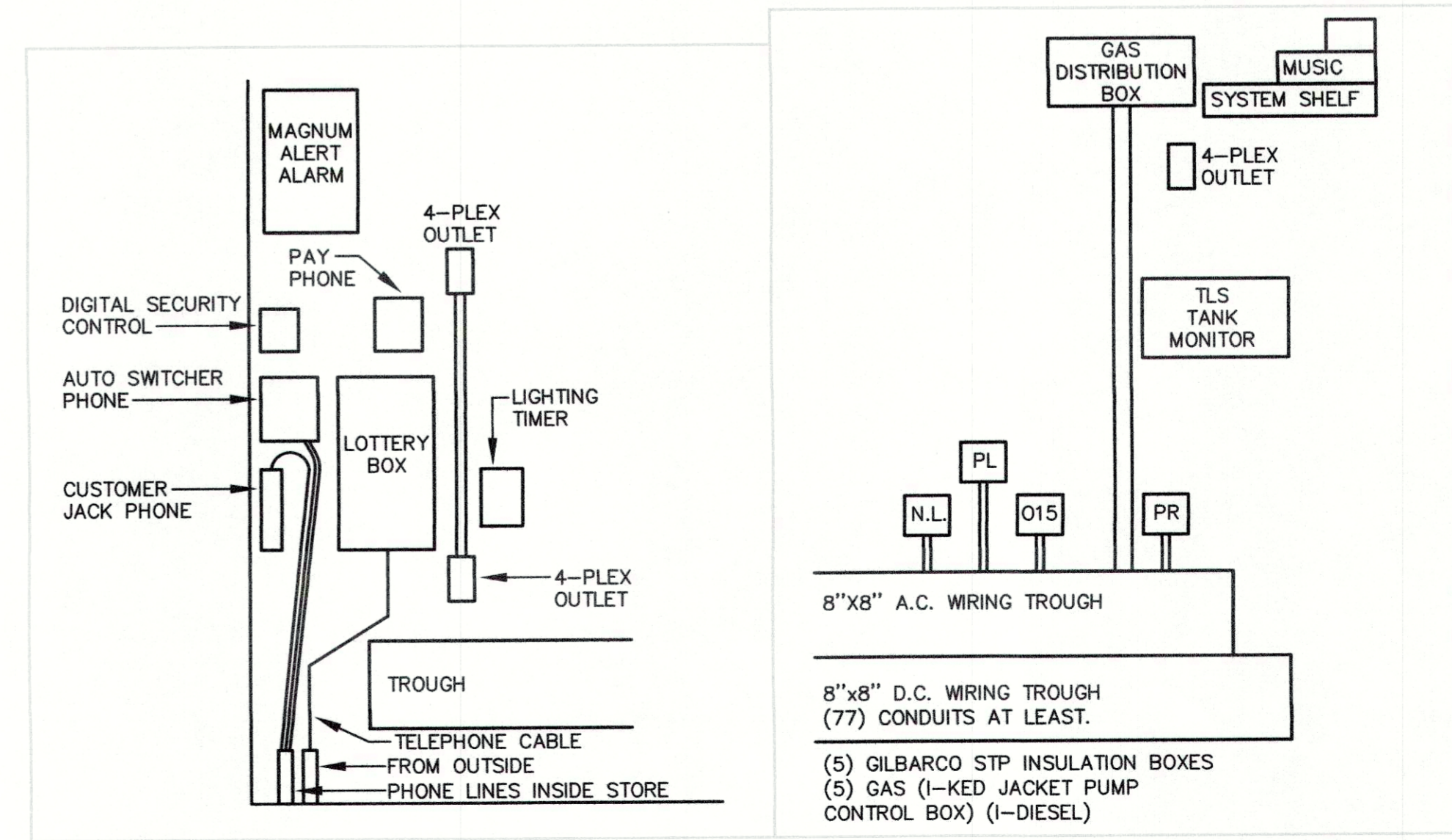
03 WALL BOX DETAIL
E100 NO SCALE



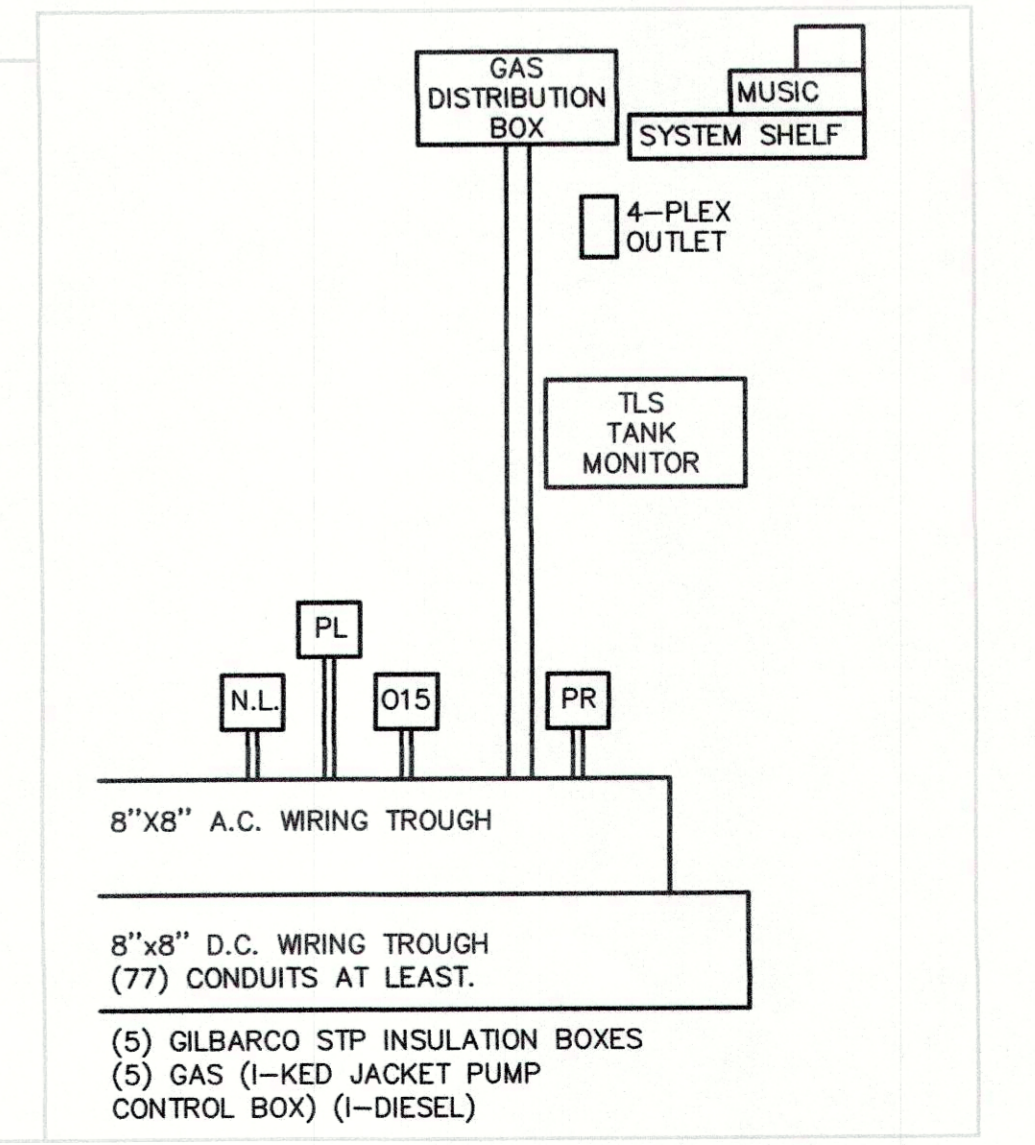
03 WALL BOX DETAIL
E100 NO SCALE



03 DELI HOOD FAN SAFETY SWITCH DETAIL
E100 NO SCALE



04 PART. ELEC. ROOM TROUGH ELEVATION
E100 NO SCALE



05 PART. ELEC. ROOM TROUGH ELEVATION
E100 NO SCALE

SYSTEM	ITEM	DEVICE MODEL & REFER TO SPEC. IF NONE LISTED	BACKBOX COVER IF APPLICABLE	MOUNTING HEIGHT	DRAWING SYMBOL
SWITCHES	LIGHT SWITCH GENERAL PURPOSE			4'-0"	⊕
	BIDDER SWITCH			4'-0"	⊕
	THREE-WAY SWITCH			4'-0"	⊕
	WALL TECHNOLOGY, ULTRASONIC WALL MOUNTED TYPE OCCUPANCY SENSORS	SENSEPOINT A19-211		4'-0"	⊕
LIGHTING	2'-0" FLUORESCENT WALL MOUNT	SEE SCHEDULE		6'-6"	⊕
	2x2' FLUORESCENT TROFFER	SEE SCHEDULE		CEIL.	⊕
	2x4' FLUORESCENT TROFFER	SEE SCHEDULE		CEIL.	⊕
	1x4' FLUORESCENT TROFFER	SEE SCHEDULE		CEIL.	⊕
	DOWNLIGHT	SEE SCHEDULE		CEIL.	⊕
	EXIT LIGHT(CEILING, WALL MOUNT)	SEE SCHEDULE		AS NOTED	⊕
POWER OUTLETS	SIMPLEX			1'-6"	⊕
	DUPLEX - SAFETY TYPE			1'-6"	⊕ S
	DUPLEX			1'-6"	⊕
	DUPLEX (ABOVE COUNTERTOP)			8" ACT.	⊕
	DUPLEX WITH INTEGRAL GROUND FAULT PROTECTION			1'-6"	⊕ GFI
	GANG RECEPTACLE IN COMBINATION WITH SWITCH (PROVIDE DIVIDER IF LIGHTING CIRCUIT IS 577V)			4'-0"	⊕ C/S
	QUADRUPLEX RECEPTACLE			1'-6"	⊕
	JUNCTION BOX			NOTED	⊕
	208/19 RECEPTACLE, AS NOTED			NOTED	⊕
	208/39 RECEPTACLE, AS NOTED			1'-6"	⊕ SS
	MISC. DUPLEX - SURGE SUPPRESSION TYPE			1'-6"	⊕ V
	DUPLEX - WALL MOUNTED			4'-0"	⊕
	WEATHER RESISTANT DUPLEX - WITH WEATHER-PROOF "WABLE IN USE" TYPE DIE-CAST METAL COVERPLATE WITH LOCKABLE ENCLOSURE AT OUTLET. INTERNATIC GUARDIAN SERIES OR EQUAL.			1'-6"	⊕ WP
CONDUIT CONCEALED IN WALLS OR IN CEILING SPACE (ARROWS INDICATED) HAVE RUN & # OF CIRCLED HASHMARKS INDICATE # OF CONDUITS				⊕	
DISCONNECT SWITCH			5'-0"	⊕	
MAGNETIC STARTER			5'-0"	⊕	
MAGNETIC COMBINATION STARTER			5'-0"	⊕	
ENCLOSED FLUSH MTD. CIRCUIT BREAKER			5'-0"	⊕	
WEATHERPROOF				⊕	
EMERGENCY PANEL BOARD, SURFACE OR FLUSH MOUNTED			6'-6" TO TOP	⊕	
NORMAL PANEL BOARD, SURFACE OR FLUSH MOUNTED			6'-6" TO TOP	⊕	
M.E.S. MAJOR EQUIPMENT SCHEDULED & INDICATOR				⊕	
TAGGED NOTE				⊕	
REVISION NOTE				⊕	
MECHANICAL EQUIPMENT DESIGNATOR (SEE MECH. SCHEDULES)				⊕	
JUNCTION BOX			AS NOTED	⊕	
PROVIDE CONNECTION TO HAND DRYER			AS NOTED	⊕	
PLUMBING FIXTURE SOLENOID VALVE/ELECTRIC EYE SENSOR CONNECTION. COORDINATE EXACT CONNECTION REQUIREMENTS WITH MANUFACTURER.				⊕	
PLUMBING FIXTURE ELECTRIC EYE TRANSFORMER CONNECTION. TRANSFORMER SHALL BE 200V-24V. MOUNT ABOVE SUSPENDED ACCESSIBLE CEILING IN 4-BOX. PROVIDE ADDITIONAL TRANSFORMERS OF SAME TYPE AS/IF NEEDED.				⊕	

SYSTEM	ITEM	DEVICE MODEL & REFER TO SPEC. IF NONE LISTED	BACKBOX COVER IF APPLICABLE	MOUNTING HEIGHT	DRAWING SYMBOL
SPECIAL OUTLETS	PLUMBING FIXTURE SOLENOID VALVE/ELECTRIC EYE SENSOR CONNECTION. COORDINATE EXACT CONNECTION REQUIREMENTS WITH MANUFACTURER.				⊕
	PLUMBING FIXTURE ELECTRIC EYE TRANSFORMER CONNECTION. TRANSFORMER SHALL BE 200V-24V AND SUPPLIED WITH PLUMBING FIXTURE. MOUNT ABOVE SUSPENDED ACCESSIBLE CEILING AS REQUIRED. PROVIDE ADDITIONAL TRANSFORMERS OF SAME TYPE AS/IF NEEDED.				⊕
DATA / VOICE / VIDEO	DATA OUTLET - NUMBER BESIDE OUTLET INDICATES NUMBER OF DATA JACKS TO BE PROVIDED AND INSTALLED. IF NO NUMBER IS INDICATED, THERE SHALL BE ONLY ONE DATA JACK.			1G	1'-6" ⊕, 2D, 3D
	VOICE OUTLET - NUMBER BESIDE OUTLET INDICATES NUMBER OF VOICE JACKS TO BE PROVIDED AND INSTALLED. IF NO NUMBER IS INDICATED, THERE SHALL BE ONLY ONE VOICE JACK.			1G	1'-6" ⊕, 2V, 3V
	COMBINATION OUTLET - NUMBER BESIDE OUTLET INDICATES NUMBER OF DATA/VOICE JACKS TO BE PROVIDED AND INSTALLED. IF NO NUMBER IS INDICATED, THERE SHALL BE ONLY ONE DATA AND ONE VOICE JACK.			1G	1'-6" ⊕, 2D/2V/2T

AS BUILT DRAWINGS:
CONTRACTOR SHALL PROVIDE DETAILED AS BUILT DOCUMENTS UPON COMPLETION OF CONSTRUCTION INCLUDING A DIMENSIONED PLAN SHOWING LOCATIONS OF ALL CONDUITS.

GENERAL NOTES (APPLICABLE TO ALL WORK AND DOCUMENTS):

- EACH CONTRACTOR, PROPOSER, SUPPLIER AND/OR MANUFACTURER SHALL REFER TO ALL DOCUMENTS PERTAINING TO THIS PROJECT AND COORDINATE ACCORDINGLY SO AS TO INSURE ADEQUACY OF FIT, COMPLIANCE WITH SPECIFICATIONS, PROPER VOLTAGE AND CURRENT CHARACTERISTICS TO AVOID CONFLICT WITH ANY OTHER BUILDING SYSTEMS. VERIFY SAME WITH SHOP DRAWINGS.
- OBSERVE ALL APPLICABLE CODES, RULES AND REGULATIONS THAT MAY APPLY TO THE WORK UNDER THIS CONTRACT. (CITY, COUNTY, LOCAL, STATE, FEDERAL, MUNICIPALITY, UTILITY COMPANY, OSHA, ETC.)
- INSTALL EQUIPMENT, MATERIALS, ETC. IN STRICT ACCORD WITH MANUFACTURERS' RECOMMENDATIONS AND DIRECTIONS. IF IN CONFLICT WITH THE DESIGN INDICATED IN CONTRACT DOCUMENTS, ADVISE THE ENGINEER PRIOR TO INSTALLATION FOR CLARIFICATION.
- THE PURPOSE AND INTENT OF ALL OF THE DOCUMENTS PERTAINING TO THIS PROJECT IS TO PROVIDE A COMPLETE, FUNCTIONAL, SAFE, LIKE NEW FACILITY. ANYTHING LESS SHALL BE UNACCEPTABLE.
- WHERE PENETRATING ROOFING MEMBRANE OR OTHER MATERIALS USED FOR WEATHERPROOFING THE BUILDING, MAKE SUCH PENETRATIONS IN A WAY THAT WILL NOT VOID OR DIMINISH THE ROOFING WARRANTY OR INTEGRITY IN ANYWAY. COORDINATE ALL SUCH PENETRATIONS WITH THE ROOFING INSTALLER.
- REFER TO ARCHITECTURAL FLOOR PLANS, ELEVATIONS AND CASWORK DETAILS FOR LOCATION OF RECEPTABLES, UTILITY OUTLETS, ELECTRICAL DEVICES, ETC.
- UNLESS OTHERWISE SPECIFIED OR INDICATED, INSTALL LIGHT FIXTURES, DIFFUSERS, REESTERS, GRILLES, SPRINKLER HEADS, SMOKE DETECTORS AND OTHER CEILING MOUNTED APPURTENANCES IN THE CEILING IN A SYMMETRICAL PATTERN, UNLESS SPECIALLY INDICATED OTHERWISE ON THE ARCHITECTURAL RELATED CEILING PLANS.
- ANY VIBRATING, OSCILLATING OR OTHER NOISE OR MOTION PRODUCING EQUIPMENT SHALL BE ISOLATED FROM SURROUNDING SYSTEMS IN AN APPROVED MANNER. NOISE OR STRUCTURALLY DAMAGING INSTALLATIONS SHALL BE SATISFACTORILY REPLACED OR REPAIRED AT THE INSTALLING CONTRACTORS EXPENSE. THE FINAL DECISION ON THE SUITABILITY OF A PARTICULAR INSTALLATION'S ACCEPTABILITY SHALL BE THAT OF THE ENGINEER.
- ALL ELECTRICAL COMPONENTS OR EQUIPMENT SHALL BE LABELED BY UNDERWRITER'S LABORATORIES OR OTHER APPROVED LISTING AGENCY. APPROVED AND LABELING OF INDIVIDUAL COMPONENTS ON AN ASSEMBLY IS NOT ACCEPTABLE AS MEETING THIS REQUIREMENT, UNLESS WAIVED BY THE ENGINEER IN WRITING.
- ALL SUPPORTS FOR EQUIPMENT, DEVICES OR FIXTURES SHALL BE UNIQUE, FROM THE BUILDING STRUCTURE. DO NOT SUPPORT WORK FROM OTHER TRADES, EQUIPMENT OR SUPPORTS WITHOUT WRITTEN PERMISSION FROM THE ENGINEER AND CONSENT OF THE OTHER TRADE, IN WRITING.
- WHERE EXIT LIGHTS ARE CONNECTED TO EMERGENCY CIRCUITS WITH KEYSWITCH OR CONTACTOR CONTROL, AN UNSWITCHED LINE SHALL BE PULLED IN TO MAINTAIN THEIR OPERATION REGARDLESS OF SWITCH POSITION.
- WHERE EXIT SIGNS OR EMERGENCY BATTERY PACKS ARE PROVIDED, THEY SHALL BE CONNECTED TO AN UNSWITCHED LINE.
- WHERE OUTLETS ARE LOCATED APPROXIMATELY BACK-TO-BACK ON OPPOSITE SIDES OF A PARTY WALL, THE OUTLETS SHALL NOT BE INSTALLED IN THE SAME STUD SPACE, BUT SHALL BE SEPARATED BY A MINIMUM OF ONE STUD, UNLESS OTHERWISE APPROVED BY THE ARCHITECT.
- ALL MATERIALS FURNISHED AND ALL WORK INSTALLED SHALL COMPLY WITH THE CURRENT EDITION OF THE NATIONAL ELECTRICAL CODES, NATIONAL FIRE CODES OF THE NATIONAL FIRE PROTECTION ASSOCIATION, THE REQUIREMENTS OF LOCAL UTILITY COMPANIES, AND WITH THE REQUIREMENTS OF ALL GOVERNMENTAL AGENCIES OR DEPARTMENTS HAVING JURISDICTION. IF ANY CONFLICTS OR DISCREPANCIES OCCUR THE MOST STRINGENT SHALL APPLY.
- DO NOT SCALE FROM DRAWINGS, AS PRINTING DISTORTS SCALE. WORK SHALL BE Laid OUT FROM DIMENSIONED DRAWINGS, OR DIMENSIONS SUPPLIED TO THE CONTRACTOR.

PPA

PICKETT/PASSAFIUME/ARCHITECTS
1974A Douglas Blvd / Suite 100 / Louisville, KY 40205
picketch.com

STATE OF KENTUCKY
BRAD PERSOON
Professional Engineer
No. 26547

10411 Meeting Street
Prospect, Kentucky 40059
502.256.3085 • f.502.226.2691
www.cantagret.com

FiveStar Food Mart
PURCHASE PARKWAY
1772 Mayfield Highway, Benton, KY 42025, KY
NEWCOMB OIL CO. LLC
1360 E. JOHN ROWAN BLVD
BARDSTOWN, KY 40004
(502) 348-3961

ISSUES AND REVISIONS	MARK	DATE	DESCRIPTION

PROJECT NUMBER: 021-095
DATE: May 11, 2016
DRAWN BY: BMP
CHECKED BY: BMP
COPYRIGHT © 2016 PPA, PLLC

ELECTRICAL LEGEND

E-100
(GAS STORES)